

High-ceiling warehouse in a closed area

Ganību dambis 30b, Rīga

Deal: RENT

Type: Warehouses

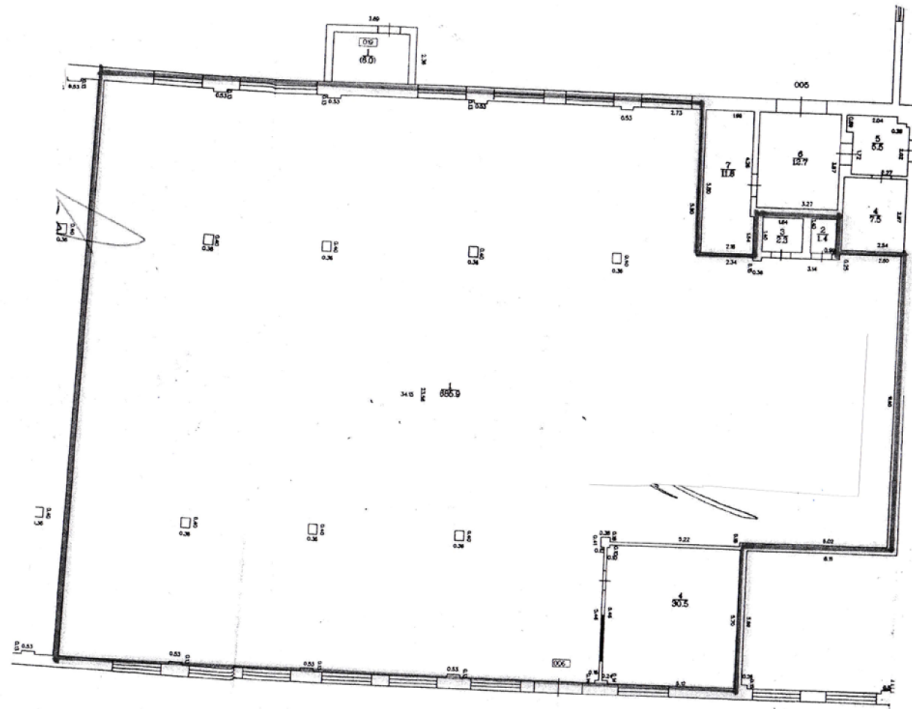
Total Area: 2418 m²

Land Area: 2418 m²

Sale Price: 7252 €

Total floor area: 2417.4m²,
 1. Room 1 - 720.1m²; Room 2 - 58.9m²; Room 3 - 666.2m²;
 Room 4 - 972.2m² (previously divided by a partition into 561m² and 411.2m²),
 Total - 2417.40 m² ,
 Price - 3.00/m² ,
 Heat is calculated by square footage ,
 DHW, electricity by meters (power - 2x32A, 40A and 63A),
 Renovated office premises,
 Commercial premises,
 Showers and bathrooms,
 Kitchen,
 Industrial concrete floor,
 Lift gate at street level,
 The premises are heated,
 All communications available,
 Gated, asphalted area,
 Parking available.





Location

