

Wide panoramic windows with a view

Gertrūdes 12, Rīga

Deal: RENT

Type: Office

Total Area: 322 m²

Sale Price: 3542 €

Spacious office premises available for rent at Gertrudes Street 12.

Facade building, entrance from Gertrude Street.

Wide panoramic windows with a view.

Planning: open plan rooms, 5 isolated rooms, kitchen, 2 WC.

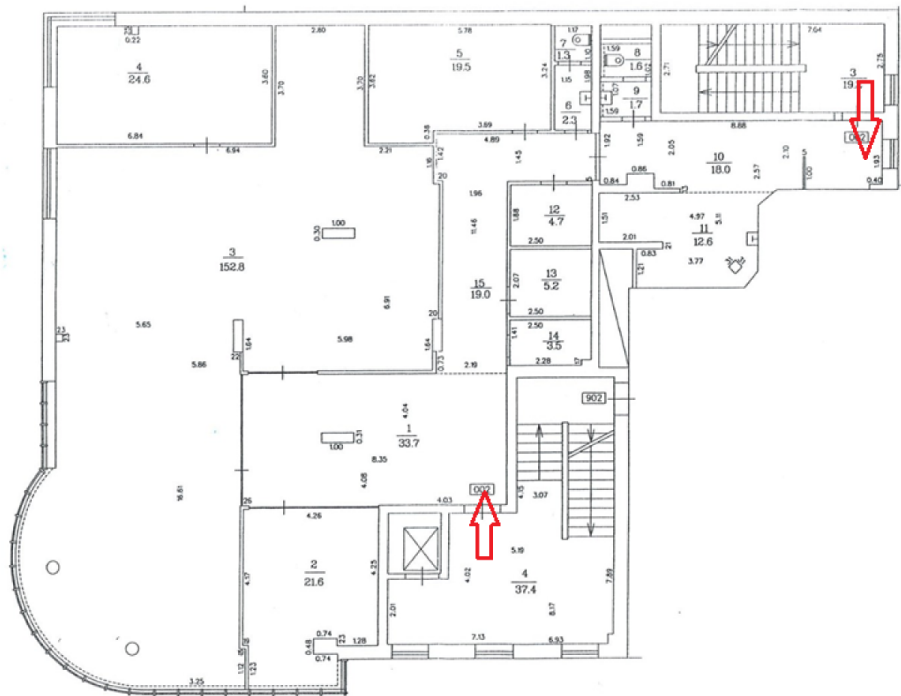
Sanitary unit, air ventilation and air conditioning systems, autonomous heating, all communications.

Live security 24/7.

Next to the building is the Euro Park parking lot.

It is possible to make cosmetic repairs according to the tenant's wishes.





Location

