

A large, flat plot of land with a direct exit to K. Ulmaņa gatve for sale

Kārļa Ulmaņa 117, Rīga

Deal: BUY

Type: Commercial Land

Land Area: 18485 m²

Sale Price: 1478800 €

A large, flat plot of land with a direct exit to K. Ulmaņa gatve for sale

The land consists of 3 plots of land: Grenču 2, Grenču 2a and Mūkupurva 3;

Area 18485 sq.m.

Entry and excellent visibility from K.Ulmanis gatve;

A clean field without buildings and trees;

Excellent traffic flow;

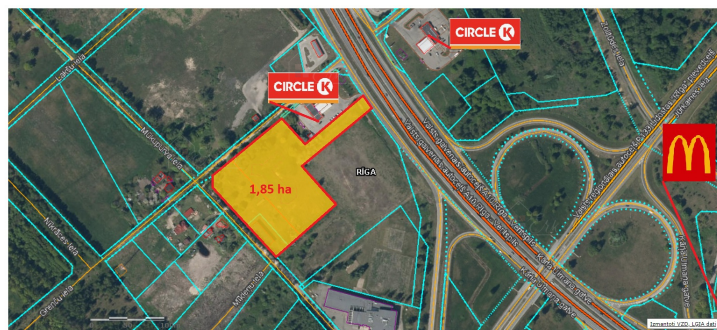
Located: Mixed business area with residential function;

Historically, a sketch project has been created, which envisages the construction of a conference center;

Maximum number of floors - 9 floors;

Maximum building intensity 260%;

Minimum free area 21%...



Location

